
THE EDGE OF THE EARTH

2022 COLLECTION





DISCOVER
THE LIVING CULTURE OF
HAIDA GWAI.



EXPERIENCE THE VERY BEST OF HAIDA GWAI

Providing an intimate glimpse of British Columbia's rugged north coast, we invite you to venture into the culturally rich archipelago of Haida Gwaii. Haida Tourism is an important component of the Haida Enterprise Corporation (HaiCo); a company focused on building enterprises that reflect Haida cultural values, creates career opportunities for Indigenous Haida citizens, and strengthens the economy of Haida Gwaii.

100% HAIDA HOSPITALITY

Haida Tourism is 100% Haida-owned. Our team is dedicated to offering an authentic Haida Gwaii experience, enhanced by regionally-inspired cuisine and immersive eco-adventures and arts, culture and heritage programming. Cultural preservation is vital to our community, and we are passionate about sharing our proud heritage and vibrant living culture with our guests and future generations.

CULTURE. NATURE. RESPECT.

We are proud stewards of the land and are committed to protecting its wild unspoiled beauty. As such, Haida Tourism properties are Sustainable Tourism Gold Certified and managed to the highest environmental standards. Every element is guided by the Haida concept of Yahguudang: respect for all living things and the interdependence that binds us.

Nature is always our inspiration.

DISCOVER OUR UNTOUCHED LANDS

Haida Gwaii, off the northern coast of British Columbia, is a temperate archipelago teeming with wildlife, ancient rainforests, pristine rivers and bays, and Indigenous heritage sites. Since time immemorial, the Haida people have respected, honoured and protected this sacred place. Join us on a journey of discovery, to share in our rich culture and explore our untouched land.

THRIVING, BY NATURE.

Haida Gwaii's unique fauna has evolved since time immemorial. Six of its ten native land mammal subspecies are not found anywhere else on earth, including North America's largest black bear, known as "taan" in the Haida language. In the waters surrounding Haida Gwaii, twenty species of whales and dolphins have been recorded, with grey and humpback whales sighted regularly during spring migration. Over 1.5 million seabirds nest along the coast, and the bald eagle is readily spotted in the skies above.



YOUR EXPEDITION TO THE EDGE OF THE WORLD.



EMBARK ON A MAGICAL JOURNEY

The faraway archipelago attracts visitors, from around the world, seeking authentic Haida cultural experiences and sustainable activities.

Arrival by Air: Flights to Sandspit and Masset, Haida Gwaii are available daily from Vancouver, BC. For more information please contact Air Canada and Pacific Coastal Airlines for year-round departures and Inland Air for seasonal charters.

Arrival by Sea: BC Ferries provides a regularly scheduled ferry service to Skidegate from Prince Rupert, BC. Connector services are available in Prince Rupert for the Inside Passage route to Port Hardy on Vancouver Island.



CLASSIC + COZY MAIN LODGE

TLLAAL · TLELL

Nestled along the banks of the serene Tlell River, surrounded by ancient forest and open sky, you'll find the Haida House at Tllaal - a classic and iconic lodge. With its timeless and cozy log aesthetic, this is the perfect home base from which to start off on your Haida Gwaii adventure. The nightly rate structure is ideal for those who wish to self-explore the many eco-adventures, natural attractions and historical and cultural sites found on Haida Gwaii's Graham and Moresby Islands.

LODGE CAPACITY: 10 ROOMS · 22 GUESTS

ACCOMMODATIONS

Featuring two double beds and private shower ensuite, our lodge guest rooms are the perfect comfortable retreat after a day of adventure.

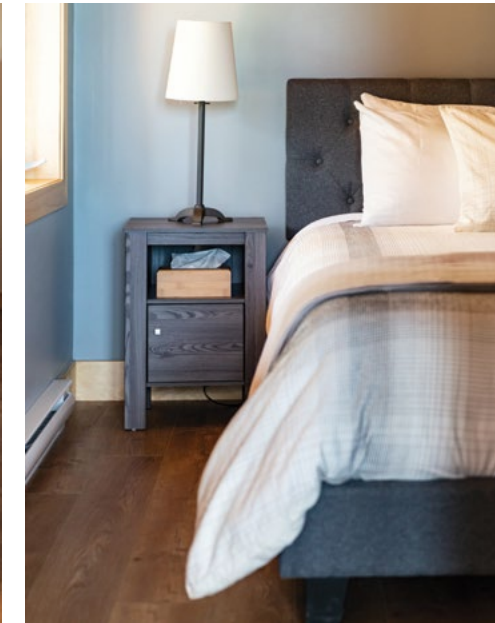
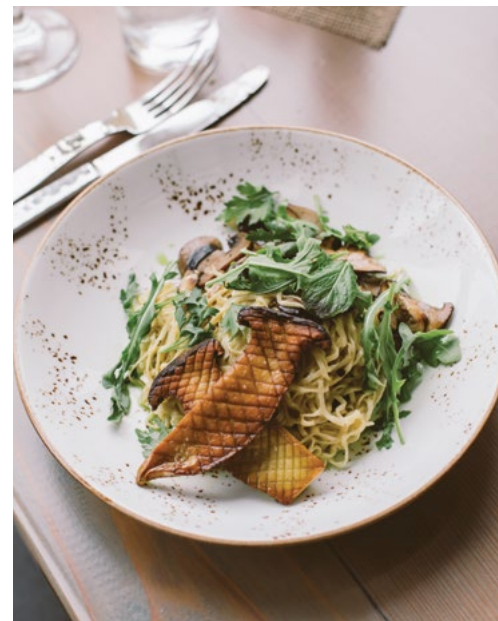
MAIN LODGE AMENITIES

Gift Shop · Conference Facilities · 50 Acre Property · Beach Access

DINING

Our casual dining room, specializing in tide- and farm-to-table cuisine, offers a variety of shareable plates, fresh seafood and charbroiled meat dishes, local seasonal vegetables and decadent homemade desserts. Our chef draws inspiration from the land, forest and sea to create the regionally-focused menu.

[LEARN MORE AT HAIDATOURISM.CA/HAIDA-HOUSE](https://haidatourism.ca/haida-house)



PRIVATE OCEANSIDE CABINS

TLLAAL · TLELL

Designed to blend harmoniously with the landscape and honour traditional Haida architecture, you'll fall in love with these private 2-bedroom cedar cabins. Boasting a choice of dune, ocean and forest views, each features a mini bar kitchen and great room with propane-fired wood stove, flatscreen TV, covered hot tub and outdoor shower.

TOTAL CAPACITY: 12 CABINS · 48 GUESTS

ACCOMMODATIONS

These Haida longhouse-inspired detached cedar cabins sleep up to 4 people in two guestrooms; a queen bedroom and a double.

CABIN AMENITIES

Private Hot Tub · Minibar Kitchen · Outdoor Shower · Stunning Ocean Views

DINING

Join us for breakfast or dinner in the Main Lodge dining room, or prepare a light meal of your own in the Cabin.

[LEARN MORE AT HAIDATOURISM.CA/CABINS](https://haidatourism.ca/cabins)



WATERFRONT BOUTIQUE HOTEL

TLAGA GAWTLAAS · NEW TOWN / OLD MASSETT

Escape to the northern edge of Haida Gwaii and discover the heritage and charm of *Gaw Tlagee Old Massett* and pristine protected expanse of North Beach and Naikoon Provincial Park. Relax in Ocean House boutique accommodation, dine on regional tide-to-table cuisine, and access the diverse array of Haida-guided eco-adventures, authentic art and cultural experiences available in the area.

LODGE CAPACITY: 20 ROOMS · 40 GUESTS

ROOMS

Tastefully designed to reflect the aesthetics of Haida culture, all Ocean House guest rooms feature private ensuite facilities. Choose a tranquil forest-view room or upgrade to an ocean inlet view with a balcony. A variety of configurations are available to meet your needs.

AMENITIES

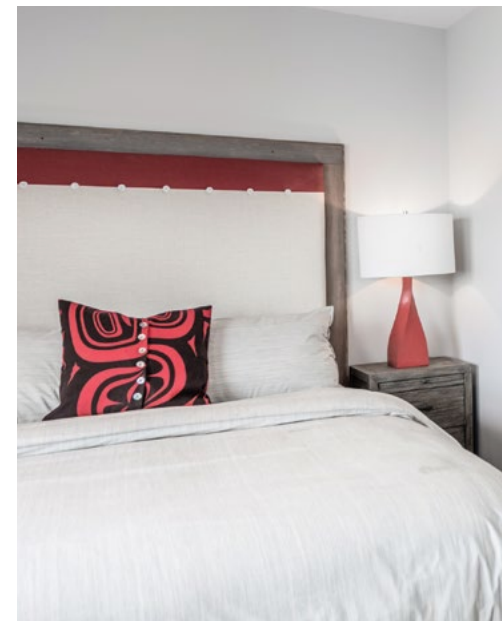
Gift Shop · Lounge · Theatre · Library · Spa

The Ocean House Spa is the ideal place to unwind. Relax in the sauna and steam room or book a massage [fees apply].

DINING

Dining at the Ocean House is an epicurean delight. The gourmet, culturally-inspired dishes feature fresh, local ingredients. Create the perfect pairing with BC VQA vintages from the carefully curated wine list.

[LEARN MORE AT HAIDATOURLISM.CA/OCEAN-HOUSE](https://haidatourism.ca/ocean-house)



LET'S CREATE MEMORIES

UNFORGETTABLE MOMENTS AT THE EDGE OF THE WORLD.

Our warm culturally-rich hospitality and awe-inspiring, secluded setting promise to elevate any occasion. From intimate weddings to family reunions and anniversary parties, our events team are experts at designing bespoke celebrations for life's most important milestones.

Weddings · Retreats · Private Events · Business Trips · Group Getaways

We would be delighted to help plan an unforgettable special moment or get-together - being an excellent host is simply in our nature. Get in touch today for more information.

ELEVATE YOUR NEXT SPECIAL EVENT.

THE CABINS
AT HAIDA HOUSE



EXPERIENCE HAIDA GWAII · THE CABINS AT HAIDA HOUSE



The edge of the world beckons with an extraordinary opportunity to “Experience Haida Gwaii.” Venture deep into monumental rainforests, where treasured heritage sites unveil ancient artifacts. Encounter remarkable rare flora and fauna, by land or sea. Participate in timeless traditions with Haida knowledge-keepers for intimate cultural insight. Discover time-honoured culinary customs and delight in unique local cuisine.

Where trees give way to sand and sea, an intimate beachfront cabin is ready to welcome you. Designed for a seamless fit into the landscape, each Haida-inspired dwelling features thoughtful touches by local artists and modern conveniences. Sleeping up to four in two guestrooms, you’ll enjoy a spacious great room with floor-to-ceiling windows and an outfitted wet bar kitchen. Absorb the sights and sounds of nature from your private deck-top hot tub, or cozy up around your indoor fireplace to experience the true essence of hygge.

PACKAGE HIGHLIGHTS

- Central Haida House location in Tlell offers the perfect base to explore Haida Gwaii’s untouched wilderness, ancient heritage and living culture
- Nightly private accommodation in a beautiful 2-bedroom ocean view cabin
- Available Seasonally June – Mid-September; Check in on Sundays

SAMPLE DAILY ITINERARY

DAY 1 | Arrive on Haida Gwaii and settle into your beautiful cabin accommodations upon reaching Haida House in Tlell. Following a warm *Xaayda Gwaayyaay Haida Gwaii* welcome and guest orientation session, enjoy a gourmet, west coast style dinner. Before or after dinner you will have time to walk along the long sandy beach or explore our 50-acre property.

7 NIGHTS | STARTING AT \$6450

DAY 2 | Start your day with breakfast before departing for Haida Gwaii via a scenic drive along the coast. Upon arrival, you will be led on a private interpretative tour of the award-winning Kay Llnagaay Heritage Centre and Museum. An interpretive tour of the area’s carved poles follows, featuring visits to the studios and carving sheds of famed Haida artisans. Finish the day with an authentic traditional Haida dining experience.

DAY 3 | Today’s adventure is a full-day marine expedition by zodiac to the ancient village site of K’uuna Skedans. Welcomed by a Haida Watchman, you will be guided through the site and learn the history of the village, what the poles represent, and how the people lived.

DAY 4 | Today we explore the area surrounding Tlell on the Magical History Tour, and enjoy moderate, relaxed hiking while learning more about the area’s rich ecology, palaeontology, and geological history. Or you may participate in a privately led class with a renowned Haida weaver. Learn a few Haida words while you create your very own woven treasure. We will also visit the quaint village of Gamadiis Port Clements and embark on a spiritual forest walk to the viewpoint of the historic Golden Spruce.

DAY 5 | After breakfast you will be off on your choice of two full-day adventures. Choose a guided kayaking excursion at the base of Gwaay Kaahlíi Masset Inlet to the mouth of the magical Yaagun Gandlee Yakoun River. Or depart on an exciting backroad 4x4 expedition through the Juskatla Estuary region, where you’ll visit ancient cultural artifacts at their site of discovery.

DAY 6 | You’ll have the opportunity to explore majestic Naikoon Provincial Park today. Highlights include a moderate hike to the top of Taaw Tldáaw Tow Hill for a breathtaking view of endless beaches and distant Alaskan islands. After a picnic lunch at famous Agate Beach, you will discover the carved pole at Hiellen Village and browse a series of local galleries and boutiques.

DAY 7 | It’s a day of North Island discovery, beginning with a half-day at remarkably beautiful North Beach. After lunch we explore the villages of Gwaay Masset and Gwaay Tlagée Old Massett. There will be several stops at

Haida artisan studios you enjoy a narrative tour of the village’s storied totems.

DAY 8 | After another delicious breakfast in the privacy and serenity of your cabin, and perhaps a brisk morning trek along the Tlell River, it is time to say farewell and make your check-out arrangements. Shuttle to the airport is available for those leaving Haida Gwaii by air today.

2022 DATES | SUNDAY ARRIVAL

May 29-Jun 05 · Jun 05-12 · Jun 12-19 · Jun 19-26 · Jun 26-Jul 03 · Jul 03-10 · Jul 10-17 · Jul 17-24 · Jul 24-31 · Jul 31-Aug 07 · Aug 07-14 · Aug 14-21 · Aug 21-28 · Aug 28-Sep 04 · Sep 04-11 · Sep 11-18

OPTIONAL UPGRADES [\$]

ADVENTURES | Gwaay UNESCO World Heritage Site Expedition + \$1250/person

INCLUSIONS + INFO

Standard rates are per person, based on double occupancy. Packages include nightly accommodations, daily meals, snacks, and non-alcoholic beverages, all included tours and activities, entrance and guide fees, all transfers. Optional upgrades, alcohol, gratuities, travel insurance or transportation to Haida Gwaii is not included.

CALL OR VISIT OUR WEBSITE FOR DETAILED ITINERARIES, INCLUSIONS, ACCOMMODATION DETAILS AND MORE.



THE CABINS
AT HAIDA HOUSE



DISCOVER HAIDA GWAII · THE CABINS AT HAIDA HOUSE



4-NIGHT STAY

We invite you to “Discover Haida Gwaii,” a mysterious and magnificent land where ancient legacies live on. Explore dazzling jewelled beaches, meet famed Haida artists, voyage to the historic village site of K’uuna Skedans, and encounter soaring carved poles- a tradition upheld since time immemorial.

Perched at the edge of wild, sandy dunes and boasting unparalleled beach access, your longhouse-style accommodations await. Stylishly furnished with modern Haida-inspired decor, each cedar cabin features a wet bar kitchen and a spacious living room complete with a propane-fired wood stove and floor-to-ceiling views. Reflect on the day’s adventures from your own outdoor hot tub or embrace the pacific atmosphere by snuggling deep into your duvet topped bed.

PACKAGE HIGHLIGHTS

- Central Haida House location in Tlell offers the perfect base to explore Haida Gwaii’s untouched wilderness, ancient heritage and living culture
- Enjoy 4-nights’ private accommodation in a beautiful 2-bedroom ocean view
- Available Seasonally June – Mid-September; Check in on Wednesdays

SAMPLE DAILY ITINERARY

DAY 1 | Arrive on Haida Gwaii and settle into your beautiful cabin accommodations upon reaching Haida House in Tlell. Following a warm *Xaayda Gwaayyaay Haida Gwaii* welcome and guest orientation session, enjoy a gourmet, west coast style dinner. Before or after dinner you will have time to walk along the long sandy beach or explore our 50-acre property.

DAY 2 | Start your day with breakfast before departing for HIGaagilda *Skidegate* via a scenic drive along the coast. Upon arrival, you will be led on a private interpretative



4 NIGHTS | STARTING AT \$4200

tour of the award-winning *Kay Llnagaay* Heritage Centre and Museum. An interpretive tour of the area’s carved poles follows, featuring visits to the studios and carving sheds of famed Haida artisans. Finish the day with an authentic traditional Haida dining experience.

DAY 3 | You’ll have the opportunity to explore majestic Naikoon Provincial Park today. Highlights include a moderate hike to the top of *Taaw Tldáaw Tow Hill* for a breathtaking view of endless beaches and distant Alaskan islands. After a picnic lunch at famous Agate Beach, you will discover the carved pole at Hiellen Village and a browse a series of local galleries and boutiques.

DAY 4 | Today’s adventure is a full-day marine expedition by zodiac to the ancient village site of *K’uuna Skedans*. Welcomed by a Haida Watchman, you will be guided through the site and learn the history of the village, what the poles represent, and how the people lived.

DAY 5 | After another delicious breakfast in the privacy and serenity of your cabin, and perhaps a brisk morning trek along the Tlell River, it is time to say farewell and make your check-out arrangements. Shuttle to the airport is available for those leaving Haida Gwaii by air today.

2022 DATES | WEDNESDAY ARRIVAL

Jun 01-05 · Jun 08-12 · Jun 15-19 · Jun 22-26 · Jun 29-Jul 03 · Jul 06-10 · Jul 13-17 · Jul 20-24 · Jul 27-31 · Aug 03-07 · Aug 10-14 · Aug 17-21 · Aug 24-28 · Aug 31-Sept 04 · Sep 07-11 · Sep 14-18

OPTIONAL UPGRADES [\$]

ADVENTURES | SGang Gwaay UNESCO World Heritage Site Expedition + \$1250/person

INCLUSIONS + INFO

Standard rates are per person, based on double occupancy. Packages include nightly accommodations, daily meals, snacks, and non-alcoholic beverages, all included tours and activities, entrance and guide fees, all transfers. Optional upgrades, alcohol, gratuities, travel insurance or transportation to Haida Gwaii is not included.

CALL OR VISIT OUR WEBSITE FOR DETAILED ITINERARIES, INCLUSIONS, ACCOMMODATION DETAILS AND MORE.





A TASTE OF HAIDA GWAII · THE CABINS AT HAIDA HOUSE



Seize the day! The “Taste of Haida Gwaii” itinerary is the perfect way to savour the food, culture, and nature of this remote archipelago on an abbreviated timeline. Dive deep into living history with a guided visit to the renowned Heritage Centre and Museum, followed by a narrative village tour. Step into the studios of acclaimed Haida artisans and indulge in a traditional Haida dinner.

Your home on Haida Gwaii is a beautiful and private cedar cabin. Designed to blend harmoniously with the landscape and honour traditional architecture, this stylishly furnished hideaway is the ideal place to reflect on the day’s adventures. From your deck, watch the sunrise while you enjoy an invigorating outdoor shower, or enjoy the evening glow and the view with a glass of wine from your own private covered hot tub.

PACKAGE HIGHLIGHTS

- Central Haida House location in Tlell offers the perfect base to explore Haida Gwaii’s untouched wilderness, ancient heritage and living culture
- Enjoy 3-nights’ private accommodation in a beautiful 2-bedroom ocean view
- Available Seasonally June – Mid-September; Check in on Sundays

SAMPLE DAILY ITINERARY

DAY 1 | Arrive on Haida Gwaii and settle into your beautiful cabin accommodations upon reaching Haida House in Tlell. Following a warm *Xaayda Gwaayyaay Haida Gwaii* welcome and guest orientation session, enjoy a gourmet, west coast style dinner. Before or after dinner you will have time to walk along the long sandy beach or explore our 50-acre property.

DAY 2 | Start your day with breakfast before departing for *HiGaagilda Skidegate* via a scenic drive along the coast. Upon arrival, you will be led on a private inter-

3 NIGHTS | STARTING AT \$3200

pretative tour of the award-winning *Kay Llnagaay* Heritage Centre and Museum. An interpretive tour of the area’s carved poles follows, featuring visits to the studios and carving sheds of famed Haida artisans. Finish the day with an authentic traditional Haida dining experience.

DAY 3 | Today we explore the area surrounding *Tll.aal Tlell* on the Magical History Tour, and enjoy moderate, relaxed hiking while learning more about the area’s rich ecology, palaeontology, and geological history. Or you may participate in a privately led class with a renowned Haida weaver. Learn a few Haida words while you create your very own woven treasure. We will also visit the quaint village of *Gamadiis Port Clements* and embark on a spiritual forest walk to the viewpoint of the historic Golden Spruce.

DAY 4 | After another delicious breakfast in the privacy and serenity of your cabin, and perhaps a brisk morning trek along the *Tlell River*, it is time to say farewell and make your check-out arrangements. Shuttle to the airport is available for those leaving Haida Gwaii by air today.

2022 DATES | SUNDAY ARRIVAL

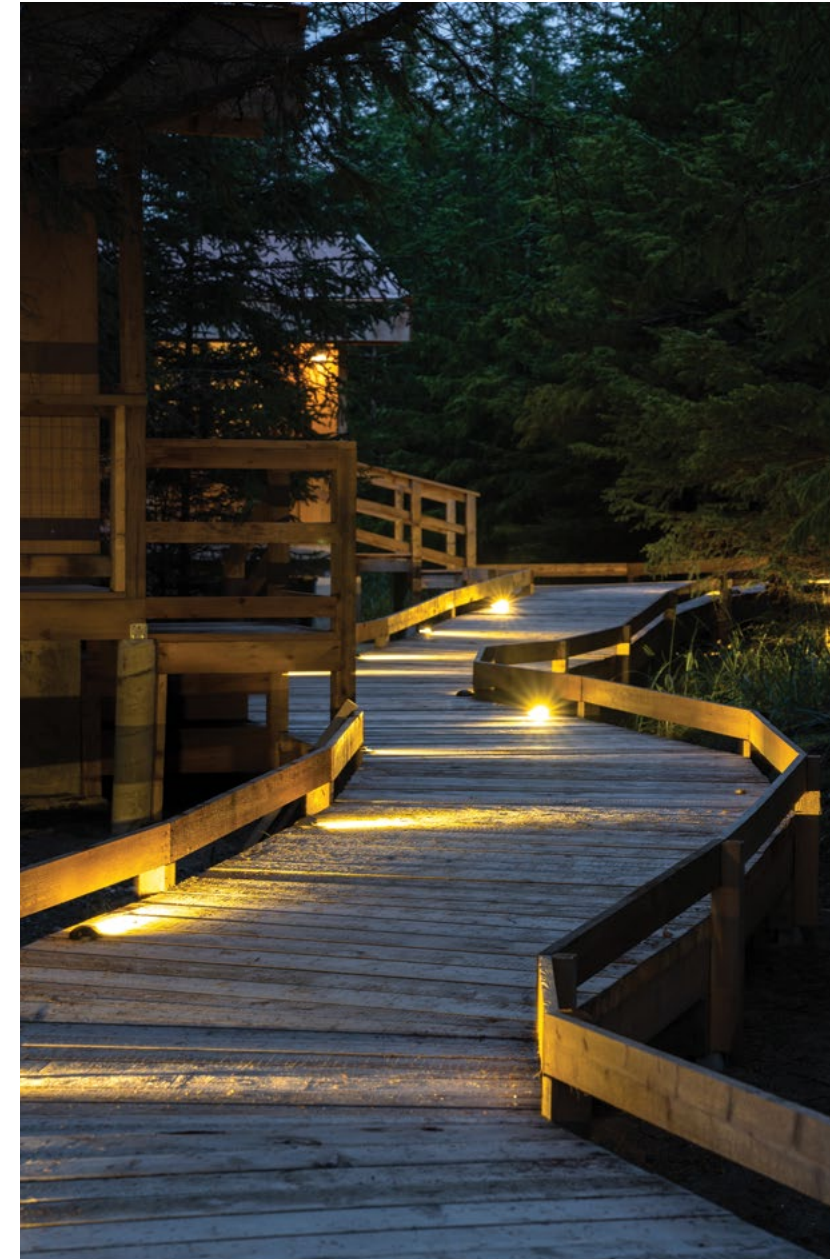
May 29-Jun 01 · Jun 05-08 · Jun 12-15 · Jun 19-22 · Jun 26-29 · Jul 03-06 · Jul 10-13 · Jul 17-20 · Jul 24-27 · Jul 31-Aug 03 · Aug 07-10 · Aug 14-17 · Aug 21-24 · Aug 28-31 · Sep 04-07 · Sep 11-14

OPTIONAL UPGRADES [\$]

ADVENTURES | *K’uuna Skedans* Marine Expedition + \$375/person

INCLUSIONS + INFO

Standard rates are per guest, based on double occupancy. Packages include nightly accommodations, daily meals, snacks, and non-alcoholic beverages, all included tours and activities, entrance and guide fees, all transfers. Optional upgrades, alcohol, gratuities, travel insurance or transportation to Haida Gwaii is not included.



BED + BREAKFAST @ HAIDA HOUSE

OCEAN FRONT CABINS | B+B RATES STARTING AT \$469/NIGHT

These beautiful and private cabins can accommodate up to four guests in two separate bedrooms (queen bed + double bed). Amenities include a private hot tub, mini bar kitchen, outdoor shower and sweeping views of Graham Island’s picturesque east coast.

MAIN LODGE ROOM | B+B RATES STARTING AT \$209/NIGHT

The cozy Haida House Main Lodge rooms are the perfect comfortable retreat after a day of adventure. Amenities include complimentary wifi, coffee maker, flatscreen tv.

BED + BREAKFAST @ OCEAN HOUSE

HOTEL GUESTROOM | B+B RATES STARTING AT \$219/NIGHT

Guest rooms feature a private ensuite and Haida-inspired decor and include access to standard resort amenities and common areas. There are several configurations and view (ocean or forest landscape) options to cater to your personal preferences.

STAY THE NIGHT.
JOIN US FOR BREAKFAST.

Book online or learn more at:

HAIDATOURISM.CA

OR CALL 1-888-602-0989

